

# MINIMED™ MOBILE APP | QUICK REFERENCE GUIDE

## GETTING STARTED

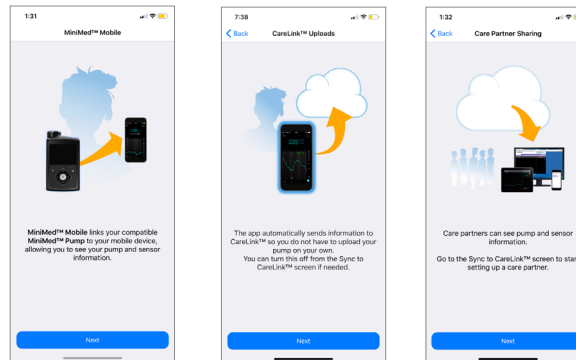
### 1 Get started

Check your local Medtronic website to make sure your mobile device is compatible with the MiniMed™ Mobile app.



Download and install the MiniMed™ Mobile app from the Google Play™ or Apple App Store®.

### 2 Begin setup

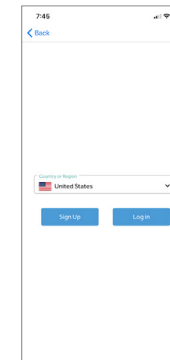


WiFi or mobile data connection is needed for set-up.

View information screens about the app.

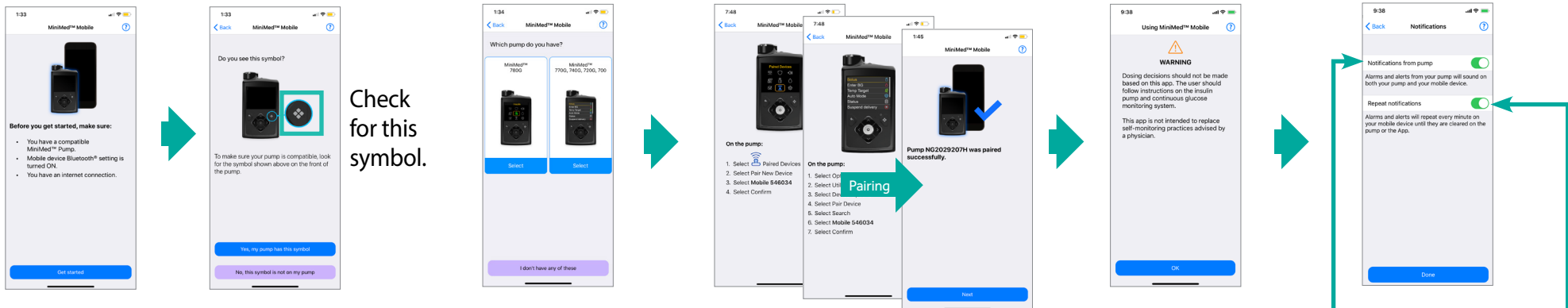
**NOTE:** Care partners can use the CareLink™ Connect app.

### 3 CareLink™ account



**Log in** if you already have a CareLink™ account. If not, tap **Sign Up**. Proceed until logged in.

### 4 Pair your pump to the MiniMed™ Mobile app



Be sure all three statements are true.

If you do not see this symbol, you cannot use this app. If there is a symbol, continue.

Select the pump that you have. **NOTE:** If asked, you must allow notifications and make data available.

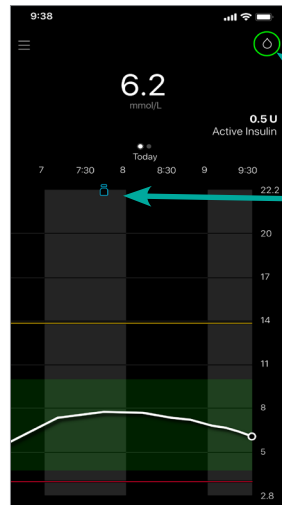
Follow the steps provided to start pairing on the pump. **NOTE:** If asked, tap **Pair** on the app.

Read and agree to the warning information.

Turn on to receive notifications on both pump and app. Turn on to repeat every minute until dismissed on app.

# MINIMED™ MOBILE APP | QUICK REFERENCE GUIDE

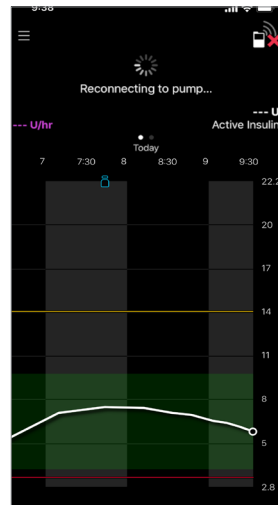
## Home screen



Tap icon for information

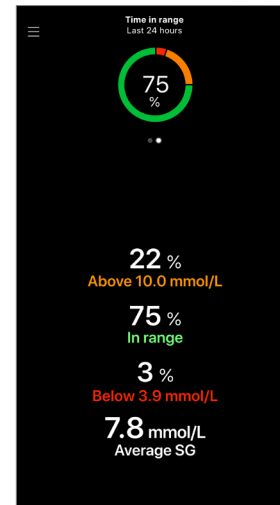
Tap icon for event details

Pinch or stretch the graph to change the amount of time displayed.



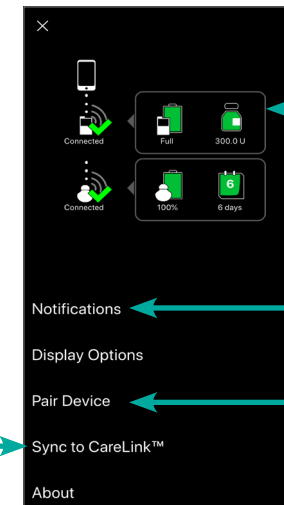
**Reconnecting to Pump...** appears when the pump and app have been out of range. Allow 60 seconds to reconnect.

## Time in range



Swipe left on the upper area of the Home screen.

## Tap ☰ for menu



**Status:** see the status of pump and CGM devices.

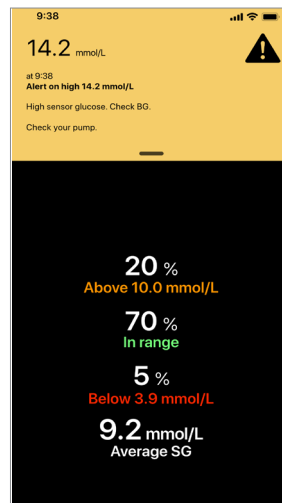
**Notifications:** use to change settings

**Pair Device:** use if pump and app need re-paired

**Sync to CareLink™:** Use **Upload Now** to upload current data for reports.

Use **Manage Care Partners** to approve or remove care partners.

## Notifications



**Alarms** appear in red

**Alerts** appear in yellow

**Reminders** appear in grey

**Messages** appear in blue



Notifications are not being received on app if this appears at the top of the Home screen.

Tap to turn Notifications on.

**NOTE:** These must be cleared on the pump even if they are dismissed on the app.

## IMPORTANT:

- If a care partner requests to follow you, go to the menu, to **Sync to CareLink** and to **Manage Care Partners** to accept the request.
- For information to be sent to the CareLink™ Connect app, the MiniMed Mobile app must be:
  - within 6 meters (20 feet of the pump)
  - have internet connection
  - be logged into CareLink™ Personal on the app
  - have **Sync to CareLink™** turned on
- If you have questions, tap ☰ and go to **About**. You will find information on many topics there.